

Girls golfers downed again

Melcher-Dallas defeated the Pella high girls golf team in a dual meet Monday 220 to 236. Low shooter for Pella was Jackie Van Wyk with a 54.

The Lady Dutch golfers cut 35 strokes off their game score but still lost to Oskaloosa Thursday 205 to 244 at the Pella Country Club.

Jackie Van Wyk was the low shooter for Pella with a 59 followed by Sue Vander Werff with a 60. Julie Hunsinger shot a 62 and Renee De Boef had a 63.

Set deadline for golf signup

The deadline for signing up for the men's Twilight League at the Pella golf and country club has been set for May 1, according to Joe Gowdy, country club manager. All those interested should either sign up at the country club or contact Don Simoens.

Women split pairs

The Central College women's softball team avenged an earlier loss to Drake by winning the second game of a

Linksmen crush Knoxville

Some torrid shooting by the Pella high boys golf team gave the linksmen an easy win over Knoxville Monday as Pella won 146 to 160. The course record for Pella high is 143, according to coach Paul Ostrander.

Medalist for Pella was Graydon Bevis, who shot a one-under-par 35, while Joel Brillhart was next with a par 36. Other scorers for Pella were Steve Simoens with a 37 and Craig Simoens with a 38.

Pella's B team also shot better than Knoxville's A team as they won 159 to 181. Medalist was John Gowdy with a 37. Other scorers were: Monte Visser, 39; Paul Vander Ploeg, 40; Jay Brummel and Stu Kelderman, 43.

doubleheader Friday and then split a doubleheader with Wartburg Saturday.

In Saturday's game against Wartburg, the teams traded 5-4 victories as Central won the opener and Wartburg the nightcap. Central scored the winning run in the seventh inning when Lana Wohlers singled, went to second on a passed ball and then scored on Nancy Sheldon's single.

Central scored two runs in the second, and sixth and then added the winner in the seventh.

Wohler's three-run homer in the third inning of the second game put Central ahead 4-2 but Wartburg came back with three runs in the bottom of the third on a single, two consecutive errors and a passed ball.

In Friday's action against Drake, Central lost the first game 8-6 before taking the nightcap 6-4.

Drake scored five runs in the fourth inning to take the opener.

Recreation Commission

HIGH LIGHTS

An agency of the Pella Municipal government

GIRLS SOFTBALL
Apr. 22 is the deadline for girls to register. Girls who will be 10 years old before Aug. 1, 1977 may register to play in this league. Register at the Recreation Office. The fee is \$5.

SWIM POOL
Season tickets are now on sale at the Recreation Office. Parents may also sign up their children for swim lessons.

PONY LEAGUE
Boys, age 13 and 14 may sign up for this league. Boys may now register at the Recreation Office and pay the \$10 fee. Registration deadline is Apr. 29.

Coaches are also needed for this league. Anyone interested in coaching, please call Eldon Schulte, 8-4571.

SENIOR CITIZENS
Anyone interested in going to the House on the Rock, the Eisenhower Memorial in Abilene and Shenandoah or Northwest U.S. & Canada, please contact the Recreation Commission, 829 Broadway or call 8-4571.

WANTED

BOYS AND GIRLS
TO SELL
TULIP TIME
SOUVENIR ISSUES
DURING TULIP TIME

Must Wear
Dutch Costumes
APPLY AT

Pella Chronicle



NEARING THE FINISH LINE in the 50 yard dash at the special olympics Saturday are three runners including COC student Jeff Groenenboom (center). The olympics were held at the Pella high track Saturday morning.

Lady Dutch JV girls down Oskaloosa

Pella downed Oskaloosa 70 to 65 in a freshman-sophomore girls track meet at Oskaloosa April 12. Taking first places for Pella were Dawn De Haan in the long jump and 220 yard dash; Lori Boyd in the 100 yard dash, and the 100 meter hurdles; and Becky Rietveld in the mile run.

The 880 yard relay team of Andrea Busker, Dawn Postma, Lynne Van Vark and Linda Dop also took

first as did the 880 yard medley relay team of Boyd, Vande Kamp, Busker, and Mary Beth Gifford.

First place finishes were also recorded by the 440 yard relay team of Van Vark, Postma, Vande Kamp and Gifford and the mile relay team of Lori Van Vark, Busker, Pam Toom and De Haan.

Results of the meet were:

Discus - Shellie Klein, 2nd 89-

8; Debbie Subbert, 4th 77-11. Long jump - Dawn De Haan, 1st 14-5 1/2; Lorrie Vande Kamp, 4th 13-9.

High jump - Dawn Postma, 2nd 4-6; Becky Rietveld, 4th 4-2.

2 mile relay - 2nd, 13:13.21, Brenda De Ruiter - 3:09.31, Pati Huisman - 3:37.83, Tammy Pothoven - 3:15.92 and Norma Sturmsma - 3:10.15.

Distance medley relay - 2nd, 5:32.05, Lori Van Vark - 30.87, Lorrie Vande Kamp - 31:06, MaDonna Van Zee - 1:18.34 and Debbie Subbert - 3:11.75.

100 yard dash - Lori Boyd, 1st, 12.7; Lynne Van Vark, 3rd, 13.2.

440 yard dash - Dawn De Haan, 2nd, 1:08.14.

880 yard relay - 1st, 2:03.1, Andrea Busker - 30.67, Dawn Postma - 31.06, Lynne Van Vark - 31.86 and Linda Dop 30.77.

100 meter hurdles - Lori Boyd, 1st, 18.2; Becky Rietveld, 2nd, 19.06.

880 yard run - Pam Toom, 2nd, 2:57.33; Debbie Subbert, 3rd, 3:16.68.

220 yard dash - Dawn De Haan, 1st, 29.2.

120 yard low hurdles - Norma Sturmsma, 3rd, 21.58.

880 yard medley relay - 1st, 2:08.79, Lori Boyd - 13.85, Lorrie Vande Kamp - 14.37, Andrea Busker - 30.57 and Mary Beth Gifford 70.0.

Mile run - Becky Rietveld, 1st, 6:56.65.

440 yard relay - 1st, 57.84, Lynne Van Vark - 15.29, Dawn Postma - 13.96, Lorrie Vande Kamp - 14.24 and Mary Beth Gifford - 14.35.

Mile relay - 1st, 4:54.63, Lori Van Vark - 1:11.93, Andrea Busker - 1:17.66, Pam Toom - 1:15.97 and Dawn De Haan - 1:09.67.

Central drops four straight

Russ Woodbury's three home runs powered Upper Iowa to a double-header sweep over Central in Iowa Conference baseball Saturday.

Upper Iowa won the first game 3-2 in Woodbury's solo home run in the top of the ninth inning. Woodbury's blast came off Randy Baker, who up until that time had pitched a superlative game.

Baker pitched 8 1/3 innings and had allowed only six hits and three walks while striking out three, before giving way to Mark Patterson.

Central scored a run in the third. Craig Verlo's hit bounced off third base and rolled into the bullpen area for a double and Verlo later scored on Bob Ball's double.

The Big Red's only other run came in the fourth when Tony Cianci singled, advanced to second on an error and scored on Steve Vande Zande's single.

In Saturday's second game, Woodbury smacked two more homers, Dave Gaskill and Don Lyons also homered for Upper Iowa.

Central scored six runs in the last two innings but it wasn't enough as Upper Iowa won 12-9.

Last Wednesday Central lost a doubleheader to the University of Northern Iowa. The home run pitch again hurt the Big Red as UNI smacked five in two games.

Northern Iowa won the opener 15-6 as Jim Bluth, Barry Farmer and Al Olson homered.

In the nightcap Central led 6-5 after five innings but UNI scored nine runs in the last two innings to win 14-6.

Blythe hit a grand slam homer and Tim Weber hit a two-run shot for the visitors.

Central now 1-9 for the year and 0-4 in conference play travels to Iowa Wesleyan Thursday and Luther Saturday. Game time is 1 p.m. for both contests.

CUI golfers take seventh

The Central College men's golf squad made a second round comeback to place seventh in the 15-school UNI-Wartburg Invitational golf tournament this weekend.

Norm Ryerson's golfers finished in 11th place after the first round at Cedar Falls, Friday, shooting 323. Saturday, at Waverly, they returned with 298, to pass four competitors.

Iowa State won the two day event with 575, Northern Iowa "A" and "B" teams finished second and third, with Wisconsin-Eau Claire placing fourth. Luther led the Iowa conference teams in the tournament with a fifth place finish, (613) and Buena Vista and Central following, as the

Big Red was edged by one stroke, 620 to 621. Other finishers were: Simpson, Loras, Wartburg, Grinnell, Dubuque, William Penn, Cornell and Upper Iowa.

Tim Esbeck and Mark Urbanek led the Central squad with 36-hole scores of 151, nine strokes behind medalist Dave Quellan of Iowa State. Other Central players and their scores included Greg Hawk, 160; Tim Johnson, 162; Marty Young, 165; and Craig Jones, 167.

The team stays on the road this week with the University of Iowa Invitational, Wednesday at Iowa City, and the William Penn Invitational, Friday and Saturday in Oskaloosa.

Fine
PRINTING
Rapid Delivery

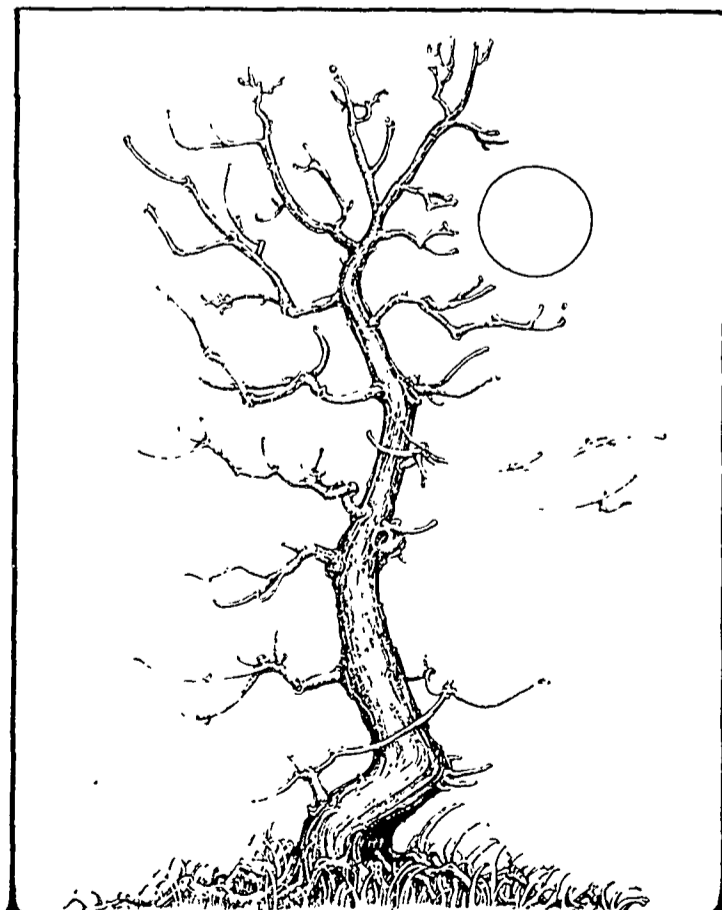


Give Yourself
A New Look...

For better business, have your forms, cards and letterheads specially designed for your needs.

Custom Work

**Pella
Chronicle**



WAITING FOR GODOT
BY SAMUEL BECKETT

April 28, 29, 30 8:15 P.M.

Drama Workshop Building, Central College

Box Office Open April 25-30 9 A.M. - 5 P.M.

For Reservations Call: 628-4151, ext. 386

Adults \$2.00

Students and Senior Citizens - \$1.00

CUI free with I.D.

Check Before You Buy

Our Prices On Chemicals
Are At

ROCK BOTTOM
(While Supplies Last)

AATREX 80W...\$1.99 Per Lb.

AMIBEN 10G...57¢ Per Lb.

LISSO II...54¢ Per Lb.

All Other Chemicals At Discount Prices

PELLA FARM CENTER

603 Franklin

Pella, Iowa

REQUEST FOR BIDS

PELLA PARK BOARD requests bids for construction of Shelter House in SOUTH PARK.

Interested firms can secure prints and specifications from Lloyd Vander Streek at Pella Bootery. Bids will be accepted until 5 p.m. Friday, May 6, 1977. Construction to be completed by July 15, 1977.

The Park Board reserves the right to refuse all bids.

We Thank You!

...for making our
Open House a success.

WINNERS

Of Last Week-End's Drawings

1st PRIZE - Flower Pot

Mrs. Orlo De Bruin
R.R. 5, Albia

2nd PRIZE - Rose

Emma Den Hartog Pella

3rd PRIZE - Persian Lilac

Harry G. Kuiper Pella

**RENAUD'S
FARM & GARDEN CENTER**



*Real
Estate*

"Talk to the Pros"
By REUBEN VAN HEMERT
Van Dyk Real Estate

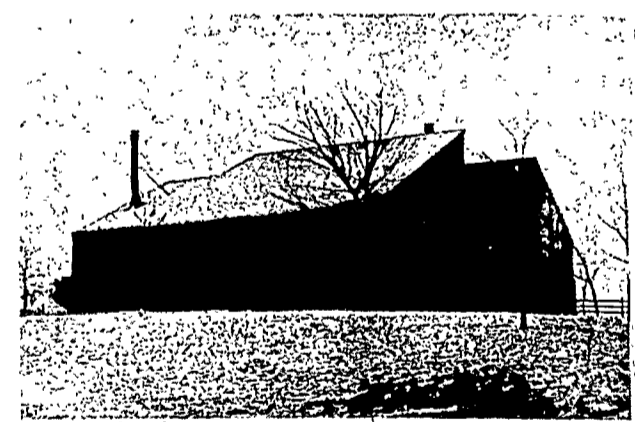
WHAT GOES WITH HOUSE?

Real estate is usually defined as the land and everything attached to it, such as: buildings, trees, shrubs, etc. The buyer normally gets all of the real estate, but none of the owner's personal property. The problem arises when personal property has become a part of the real estate. This is called a fixture and does pass with the real estate.

There are three usual tests which must be satisfied. Has the personal property been permanently annexed to

the real estate? Is it intended to become part of the real estate? And finally, what is the local custom? Usual fixtures might include: shades, heaters, ranges, screens, storm windows, lighting fixtures, etc.

It is important that the seller spell out specifically in his sales agreement exactly what he intends to give to the buyer as part of real estate. This will save misunderstanding at the closing, and sometimes save a sale.



Are you looking for a beautiful home overlooking Red Rock Dam? Then you must take a look at this three bedroom home. 10 1/2 acres of ground. Seeing is believing.



Four bedroom home, open stairway, large kitchen. Close to square. Under 25,000.

VanDyk
REAL ESTATE

Reuben Van Hemert - Broker
John M. Van Dyk

729 FRANKLIN

628-4904

Marge Van Hemert
Bob Van Ryswyk
Aida Hookstra
John Vos

Stan Van Hemert
Marc White
Earl Pohlmann
Gene Dop